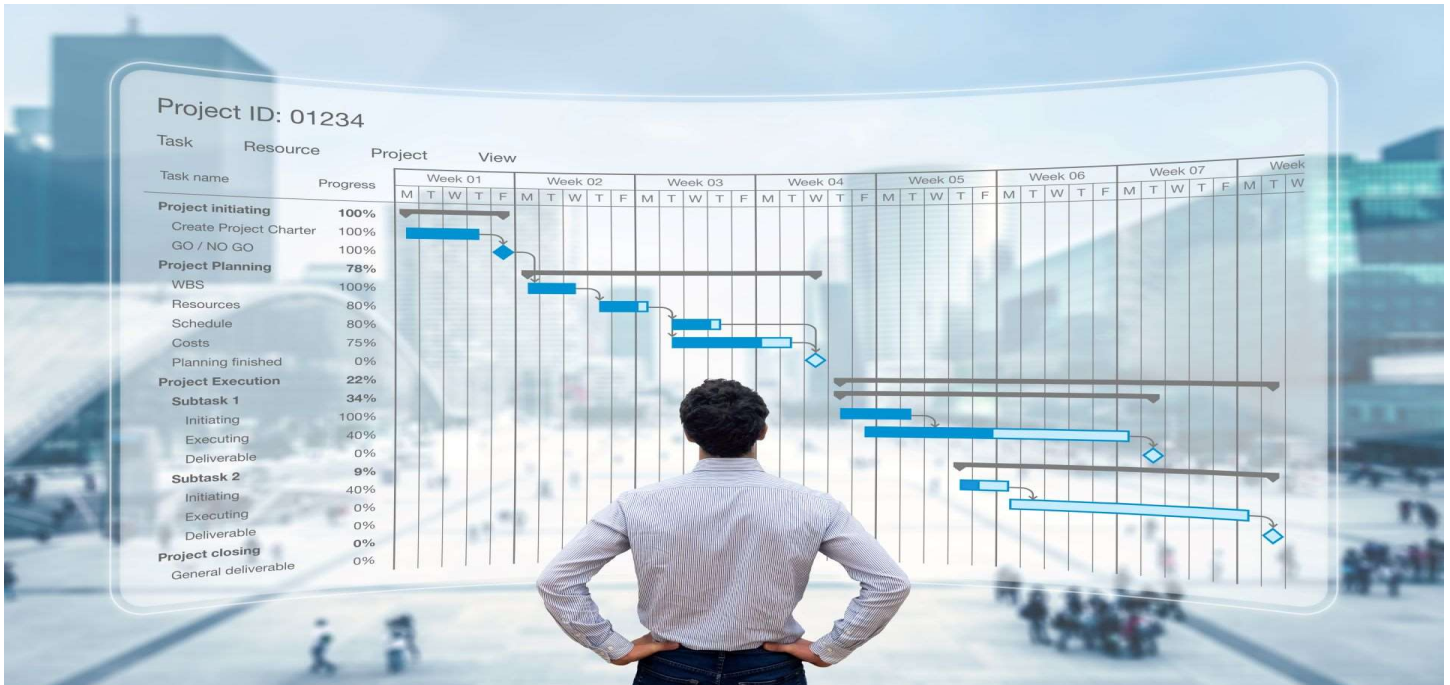


# SPMP™ Schedule & Planning Management Professional™ Credential Certification Fact Sheet



## ABOUT SPMP™ SCHEDULE & PLANNING MANAGEMENT PROFESSIONAL™ CERTIFICATION

“In **project management**, a schedule is a listing of a project's milestones, activities, and deliverables. Usually, dependencies and resources are defined for each task, then start and finish dates are estimated from the resource allocation, budget, task duration, and scheduled events. A schedule is commonly used in the project planning and project portfolio management parts of project management. Elements on a schedule may be closely related to the work breakdown structure (WBS) terminal elements, the Statement of work, or a Contract Data Requirements List” according to Wikipedia.com.

In the space and sphere of Project Management and Project Control, the **SPMP™ Schedule & Planning Management Professional™** is the accountable and responsible person who fully develops, plans, manages, executes, controls and monitors, tracks and updates, and communicates all the Schedule and Planning aspects and efforts of a Project/Program in a regular frequency, and disseminates all the Schedule and Planning information at all stages and time-lines of the Project, and throughout the life-cycle, to all its stakeholders including the Project Managers, Project Executives and C-suite Executives

Page 1 Price per one SPMP Participant is \$4,999.00 (USD)

Register and pay at: <https://evmi.com/spmp>

Phone: +1.469.920.4066 (USA) | [certification@evmi.com](mailto:certification@evmi.com) | [info@evmi.com](mailto:info@evmi.com)

EVMI, P.O BOX 1624 FRISCO TEXAS 75034 USA | ©Copyrights. All Rights Reserved, 2007 to present. EVMI®

USA | Canada | Mexico | India | China | Japan | South Korea | Australia | Europe | Africa | Latin America | Middle east

# SPMP™ Schedule & Planning Management Professional™ Credential Certification Fact Sheet

The SPMP™ Schedule & Planning Management Professional™ credential certification program is an intensive and **advanced** three-day Project Planning and Scheduling program designed to develop the advanced knowledge base of Senior-level Schedule and Planning Management Professionals and equip with best practice Scheduling and Planning competencies, strategies and advanced knowledge to plan, build, manage, execute control and monitor, very large and complex schedules from cradle to grave.

SPMP™ Schedule & Planning Management Professional™s enforce and ensure full compliance of Schedule and Planning best practices in their Schedule and Planning development, management, execution, control, and monitoring.

Upon completion of the SPMP™ Schedule & Planning Management Professional™ program, all SPMP™ Schedule & Planning Management Professional™ participants will be able, ready and capable of effectively and efficiently implementing comprehensive Schedule and Planning best practices on their schedules at all levels of their Program or Project development, and at the organizational level that ensures full compliance with any industry or Government compliance and regulations such as meeting the compliance requirements EIA 748-D Earned Value Management Systems (EVMS) Industry Standards Compliance, Certification and Surveillance



Page 2 Price per one SPMP Participant is \$4,999.00 (USD)

Register and pay at: <https://evmi.com/spmp>

Phone: +1.469.920.4066 (USA) | [certification@evmi.com](mailto:certification@evmi.com) | [info@evmi.com](mailto:info@evmi.com)

EVMI, P.O BOX 1624 FRISCO TEXAS 75034 USA | ©Copyrights. All Rights Reserved, 2007 to present. EVMI®

USA | Canada | Mexico | India | China | Japan | South Korea | Australia | Europe | Africa | Latin America | Middle east

# SPMP™ Schedule & Planning Management Professional™ Credential Certification Fact Sheet

## SPMP™ CERTIFICATION PROGRAM MODULES:

### SPMP™ FOUNDATIONAL:

- Schedule and Planning Foundations and Fundamentals
- Skills, Qualifications, Functions, Roles and Duties of the Schedule and Planning Management Team Members

### SPMP™ MODULE 1: SCHEDULE MANAGEMENT & PLANNING

**Schedule Management and Planning:** Topics include developing the Schedule Management Plan, Creating the Integrated Master Schedule (IMS); Scheduling Methods and Tools, Inputs into the Schedule Management Plan

### SPMP™ MODULE 2: SCHEDULE DEVELOPMENT

**Schedule Development:** Topics include: Organizational Breakdown Structure (OBS), Responsibility Assignment Matrix (RAM), WBS Work Breakdown Structure (WBS); Integrated Master Plan (IMP), Cost Breakdown Structure (CBS); Integrated Master Schedule (IMS), Basis of Estimates (BOEs), Develop Scheduling Tools and Methods, Develop Work Activities and Milestones, Activity Dependencies, Estimate Activities Durations, Time Units and Calendars, Critical Path, Establish and allocate Margins, Resource and Cost Loading, Budget Loading; Float, Schedule Logic such as FS, SF, FF, Schedule Estimating Methods

### SPMP™ MODULE 3: SCHEDULE OUTPUTS

**Develop Schedule Outputs:** Topics include Integrated Master Plan (IMP), Integrated Master Schedule (IMS), Summary Schedule, Analysis Schedule

### SPMP™ MODULE 4: SCHEDULE ASSESSMENT AND ANALYSIS

**Schedule Assessment and Analysis:** Topics include Requirements Check, Health Check, Risk Identification, Critical Path, Schedule Analysis, Risk Analysis

### SPMP™ MODULE 5: SCHEDULE MAINTENANCE AND CONTROL

**Schedule Maintenance and Control:** Topics include Creating Schedule Baseline, Update Schedule with Actual Progress, Variances, Critical Path Length Index (CPLI), Schedule Performance Index (SPI), Time-based SPI, Earned Schedule, Earned Value Management

Page 3 Price per one SPMP Participant is \$4,999.00 (USD)

Register and pay at: <https://evmi.com/spmp>

Phone: +1.469.920.4066 (USA) | [certification@evmi.com](mailto:certification@evmi.com) | [info@evmi.com](mailto:info@evmi.com)

EVMI, P.O BOX 1624 FRISCO TEXAS 75034 USA | ©Copyrights. All Rights Reserved, 2007 to present. EVMI®

USA | Canada | Mexico | India | China | Japan | South Korea | Australia | Europe | Africa | Latin America | Middle east

# SPMP™ Schedule & Planning Management Professional™ Credential Certification Fact Sheet

## SPMP™ MODULE 6: SCHEDULE DOCUMENTATION & COMMUNICATIONS

**Schedule Documentation and Communications** include Schedule Reporting formats, Schedule Reporting tools and Schedule Reporting types; Schedule Archiving; Skills required for Schedule Documentation and Communications, Major Scheduling Software Types

## SPMP™ MODULE 7: MY SPMP Schedule & Planning Management Plan™ Development

All SPMP Participants will be given their "My SPMP Schedule & Planning Management Plan™" templates that will be used to develop your organizations Schedule & Planning Management Plan and Strategy. All Participants must score **80%** or higher and must submit their final "My SPMP Schedule & Planning Management Plan™" for grading within 30 days after the last day of class

## ENGLISH LANGUAGE REQUIREMENT:

The SPMP™ certification program is given in the English language only.

## SPMP™s – INDUSTRIES SERVED & WHERE WE WORK:

**SPMP™ Schedule & Planning Management Professional™s** work across all Industries and notably: US Federal Government, US Department of Defense (DoD), Management Consulting; Transportation, Defense, Utilities, Energy & Nuclear Power, Oil & Gas; Telecommunications, Information Technology; Computer, Security, Heavy Construction; Aerospace; Aviation; Banking and Finance; Automotive, Infrastructure

**WHO MAY APPLY:** All Vice Presidents, Chief Operating Officer (COO), Chief Project Schedulers, Chief Project Officers, Chief Project Control Officers, Senior Schedulers, Senior Project Managers, Senior Managers, Program Managers, Project Control Officers (PCOs), Managers, Senior Product Managers, Project Engineers and Senior Engineers who work in all industries across all governments, commercial firms, private firms, organizations and international organizations/firms.

## SPMP™ CERTIFICATION DURATION: 3 Days

**PRICE: \$4,999 per participant**

REGISTER AND PAY AT: <https://evmi.com/spmp>

Page 4 Price per one SPMP Participant is \$4,999.00 (USD)

Register and pay at: <https://evmi.com/spmp>

Phone: +1.469.920.4066 (USA) | [certification@evmi.com](mailto:certification@evmi.com) | [info@evmi.com](mailto:info@evmi.com)

EVMI, P.O BOX 1624 FRISCO TEXAS 75034 USA | ©Copyrights. All Rights Reserved, 2007 to present. EVMI®

USA | Canada | Mexico | India | China | Japan | South Korea | Australia | Europe | Africa | Latin America | Middle east